



Dri-Lube Plus™

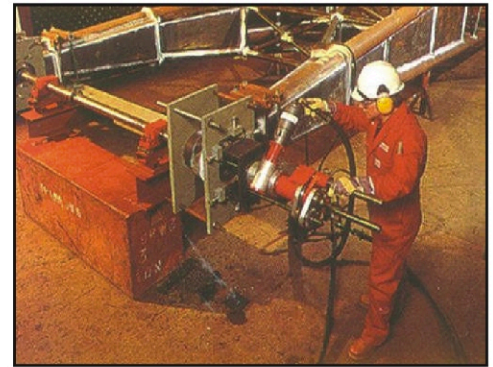
Multi-Purpose, Heavy Duty,
Molybdenum Disulfide Aerosol



Dry moly film lubricant for high pressure, high temperature and heavy load conditions

Used Extensively In...

- | | |
|-----------------------------------|-----------------------|
| • Industrial Manufacturing | • Automotive Garages |
| • Utility & Power Plants | • Machine Shops |
| • Food Processing | • Textile Mills |
| • Printing Facilities | • Marinas |
| • Chemical Plants & Refineries | • Farming |
| • Construction & Mining | • Water Departments |
| • Paper Mills & Packaging | • Petroleum Pipelines |
| • Steel Mills & Foundries | • Oil Well Drillers |
| • Federal, State & Local Agencies | • Plumbing |



- **Long Lasting Lubricant** — *Forms a Thin, Dry Black Coating*
- **Adheres & Lubricates** — *Withstands Extreme Pressure, Heavy Load, High Temp. Conditions (Up To 750°F). Reduces Wear and Part Replacement*
- **Replaces and Outlasts Graphite & Silicone in Every Application** — *Contains Moly for Superior Anti-Friction & Anti-Seizure Properties*
- **Dries to a Non-Tacky Finish to resist Dust and Abrasive Particles** — *Lubricates where gummy oils & greases cannot be used.*
- **Seals out Moisture to Prevent Rust & Corrosion** — *Resists water, oils, alkali's, and most acids*
- **Excellent as a Pre-Lube for Bearings, Journals and Gears**
- **Suitable for Use in Meat & Poultry Plants as a Non-Food Contact Lubricant in Non-Processing Areas**

Applications Include

- Conveyors
- Pulleys & Reels
- Machine Way
- Pressed Fittings
- Guides & Slides
- Slider Bearings
- Gears & Chains
- Forklift Slides
- Mower Decks
- Electric Hoists
- Dies
- Lathes
- Cams
- Drill Presses
- Tracks
- Welding Gun Coils

USDA H2

Does Not Contain 1,1,1 Trichloroethane

LUBEMASTER™

Certified Laboratories
A Division of NCH India Pvt Ltd, 2C/ 8 SIDCO Developed Plot
3rd Sector, 3rd Street-South Phase, Ambattur Industrial Estate, Chennai-600058
Phone: 044- 6515 7384 / 2625 7753
Email: support@certifiedindia.com, www.certifiedlabs.in



Division of Certified Laboratories